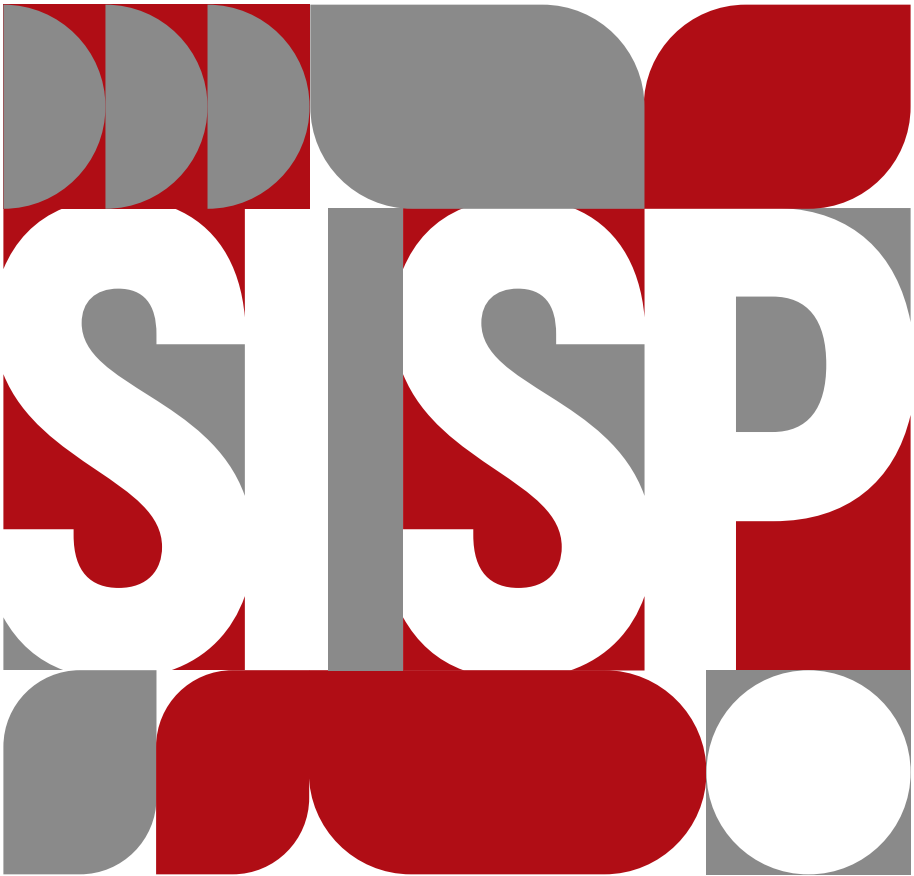


2024

**SOGANG INTERNATIONAL
SUMMER PROGRAM**



SOGANG UNIVERSITY

**THE JESUIT UNIVERSITY
IN SEOUL SINCE 1960**



ABOUT **SO GANG UNIVERSITY**

Founded by the American Jesuits in 1960, Sogang has been regarded as one of the most selective and prestigious universities in South Korea.

It gained its fame and reputation in the 60's-70's as many of Sogang's faculty members had helped spur South Korea's economic development by serving in top cabinet positions in the government, making the university an attractive choice for students.

In particular, among the mid-sized universities (those without medical college, arts and sports college), Sogang has been understood as the top school in Korea.



WHY SOGANG?

Top 10 Research University in Korea

Located at the center of Seoul

International Campus and its neighborhood

Various English Course Offerings

World's Best Korean Language Education



SISP OVERVIEW

Program Period July 1st ~ July 26th

Orientation July 1st

Classes Start July 2nd

Classes End July 25th

Closing Ceremony July 26th

Extracurricular Activities

As SISP considers cultural experiences as important as academic study, various extracurricular activities are arranged to meet students' diverse needs and desires to experience Korea more deeply.



**BUDDY
ACTIVITIES**



**HIKING
TRIPS**



**CLUB
ACTIVITIES**

**FIELD
TRIPS**

ADMISSION

Application Period - Nov 13th ~ May 24th, 2024

Early-bird Registration - Nov 13th ~ Jan 26th, 2024

ELIGIBILITY

- Any undergraduate or graduate students currently enrolled in university
- Prospective students entering university in September 2024
- Graduates from accreditated universities or institutions of higher education



APPLICATION PROCEDURE

- 1 Visit summer.sogang.ac.kr, choose “Registration” tab and click on “Apply Here”
- 2 After creating an account, fill in the online application form for SISP 2024 and submit required documents as stated on the website
- 3 Confirmation e-mail will be sent along with an invoice within a week after application
- 4 Make the payment according to the invoice. After payment, you will receive a welcome e-mail attached with a receipt and an admission letter
- 5 Follow further instructions mentioned in the welcome letter to submit additional documents

FEES

TUITION

1 course - **1,700,000 KRW**

2 courses - **2,600,000 KRW**



OPTIONAL FEES

- **Dormitory Fee - 700,000 KRW**
We recommend our on-campus international dormitory that can accommodate around 900 students in its cozy double rooms.
- **Field Trip Fees - 500,000 KRW**
Beyond academics, we will give you opportunities to experience the culture more thoroughly with field trips and cultural events.

SCHOLARSHIP

Early Bird : 10% on tuition

- Those who complete the whole application process before Jan 26th

Partnership : 20% on tuition

- Those from partner universities of Sogang

Jesuit network : 35% on tuition

- Those from Jesuit partner universities of Sogang

Exchange/visiting : 40% on tuition

- Those who were, or will be exchange/visiting students at Sogang



PAYMENT

- All international card payments and wire transfers are only accepted through SISP's partner agency, FLYWIRE
- Domestic payments can be made not through FLYWIRE



COURSES

* Courses are subject to change

Students can take 1~2 courses (3 or 6 credits)

All courses are taught in English, except Korean language courses

Business

- International Business
- General Statistics

Psychology

- General Psychology
- Cognitive Psychology

Korean Studies

- K-pop and Cultural Studies
- K-movie and Hallyu
- History of Korea

Korean Language

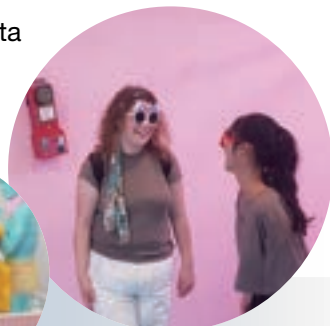
- Elementary Korean
- Intermediate Korean
- Advanced Korean

Social Studies

- History of Korean Politics
- Gender and Ethnicity
- Korean Society
- International Relations

Data Science

- AI & Big Data



LOCATION OF SOGANG

- Surrounded by four major subway stations (Line 2, 6, and GJ Line)
- Close to Han River, the main river of Seoul with many parks and beautiful sceneries
- Located in the Sinchon neighborhood, also known as the youth town surrounded by universities and schools



1
World Cup Stadium



2
The Royal Palace



3
Namsan Tower



4
City Hall



5
DDP

1

6

8

7



2

4

5

3

9

10



6
Hongdae Street



7
Yeouido



8
Gyeongui Forest Park



9
War Memorial Complex



10
Itaewon

International Summer Program | Office of International Affairs (OIA)

Tel 82-2-705-7804

Email summer@sogang.ac.kr

Website summer.sogang.ac.kr

Fax 82-2-705-8060

IG [summeratsogang](https://www.instagram.com/summeratsogang)

